

HyPixel™ R1

4K NIR Endoscope Camera System

Better Visibility Greater Precision





How to locate the target area in real-time, and navigate the operation in the minimally invasive surgery?

The HyPixel™ R1 4K NIR endoscope camera system can provide real-time fluorescence images of the anatomy structure, enabling surgeons to perform operations with more confidence.

Greater Precision

FluoDirect™ Technology / See Exactly What You Need

FluoDirect™ technology provides real-time overlapped fluorescence images for intraoperative tracing and navigation, with no need to change regular operating habits of surgery.

The technology also delivers a highly sensitive fluorescence signal recognition, displaying clear boundaries between white light images and fluorescence images.



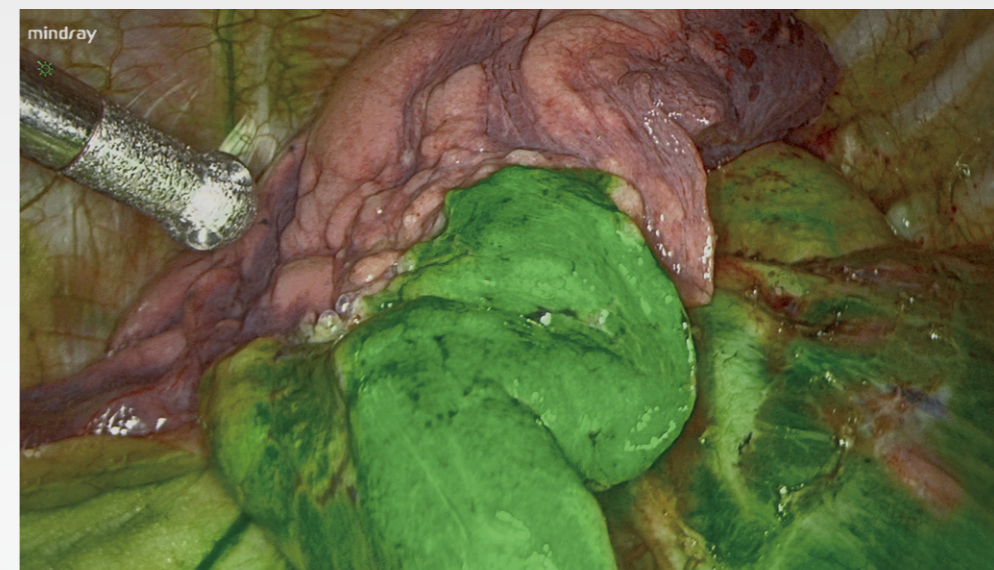
Navigate the operation smoothly via clearer visualization of organs and lesions.



Avoid excessive lymph node dissection via sentinel lymph node mapping.



Reduce occurrences of anastomotic leakage based on gastrointestinal perfusion evaluation.



Pulmonary intersegmental plane identification



Map sentinel lymph node for endometrial cancer.

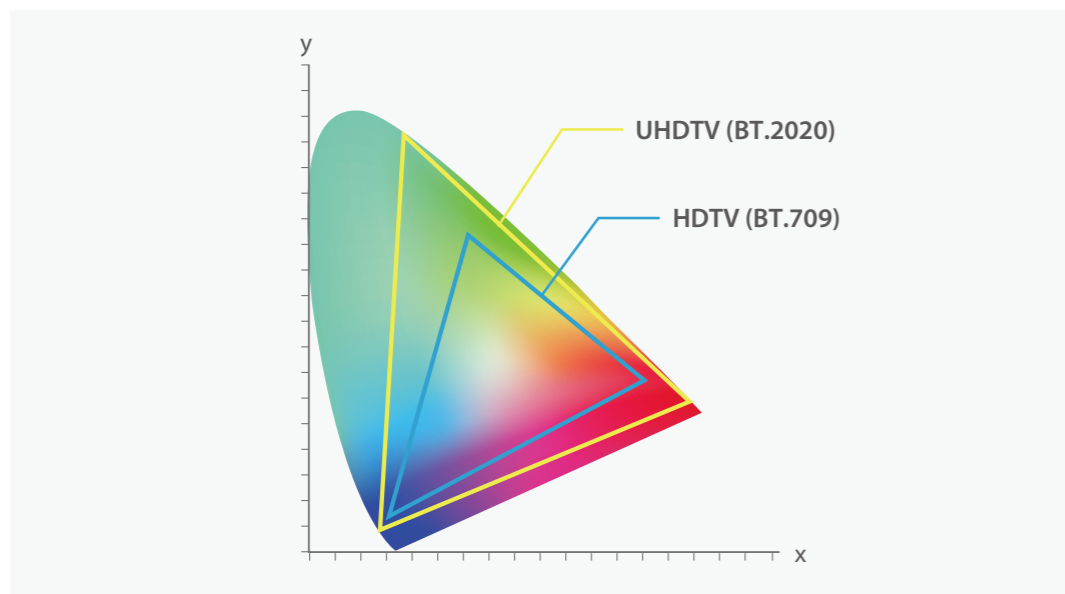
Better Visibility

4K Resolution with Wide Color Gamut

3840 x 2160 ultra HD output displays richer detail of tissue textures, allowing for better tissue identification.

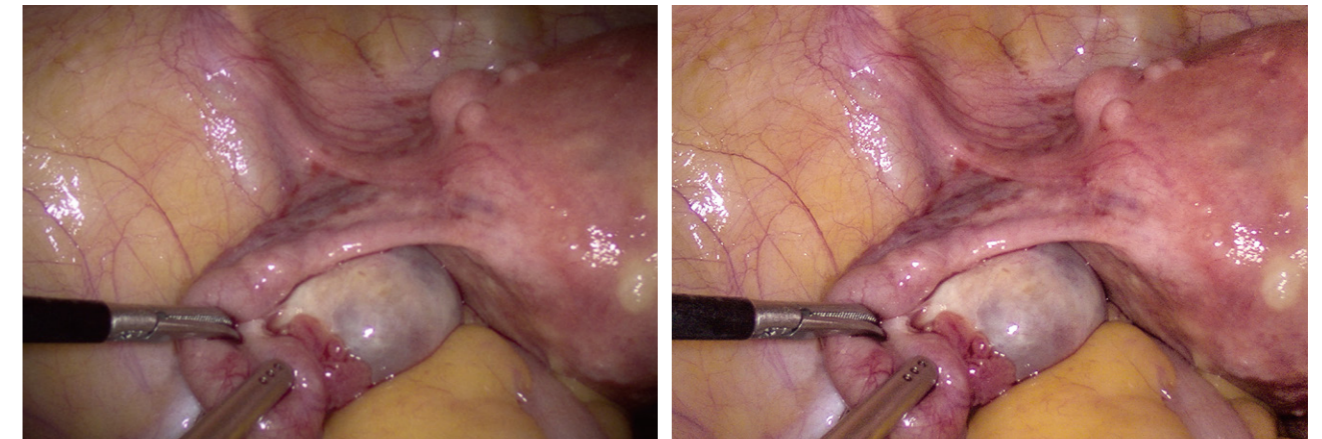


A wider color gamut provides a more native-authentic image, which brings a sharp image of adjacent tissues.



Closer to Reality via Intelligent Algorithms

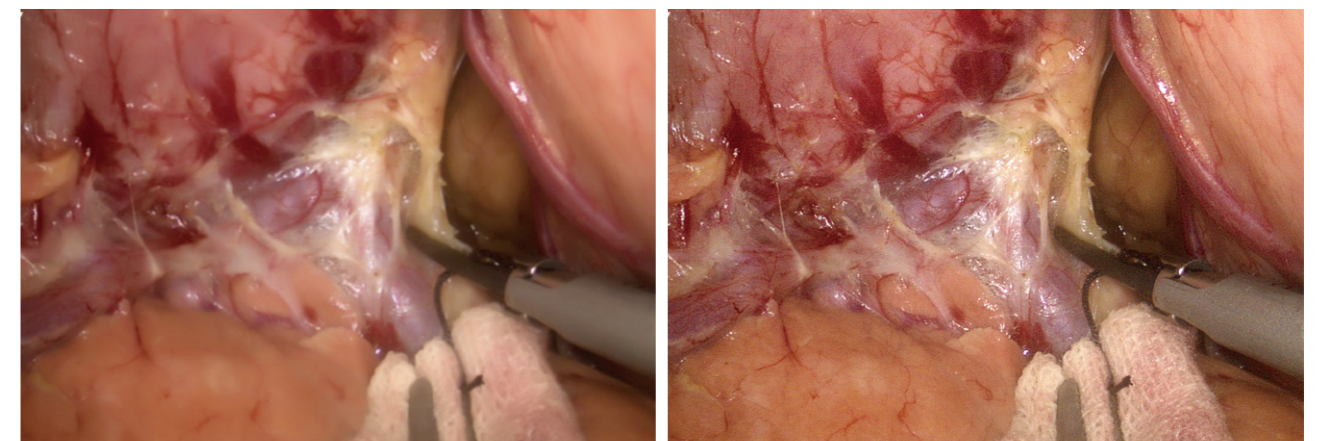
Automatic brightness adjustment allows for high-quality images with optimal brightness in dark area.



Before

After

Optimized image processing allows the system to show better anatomical details, enabling surgeons to perform surgery with greater accuracy.

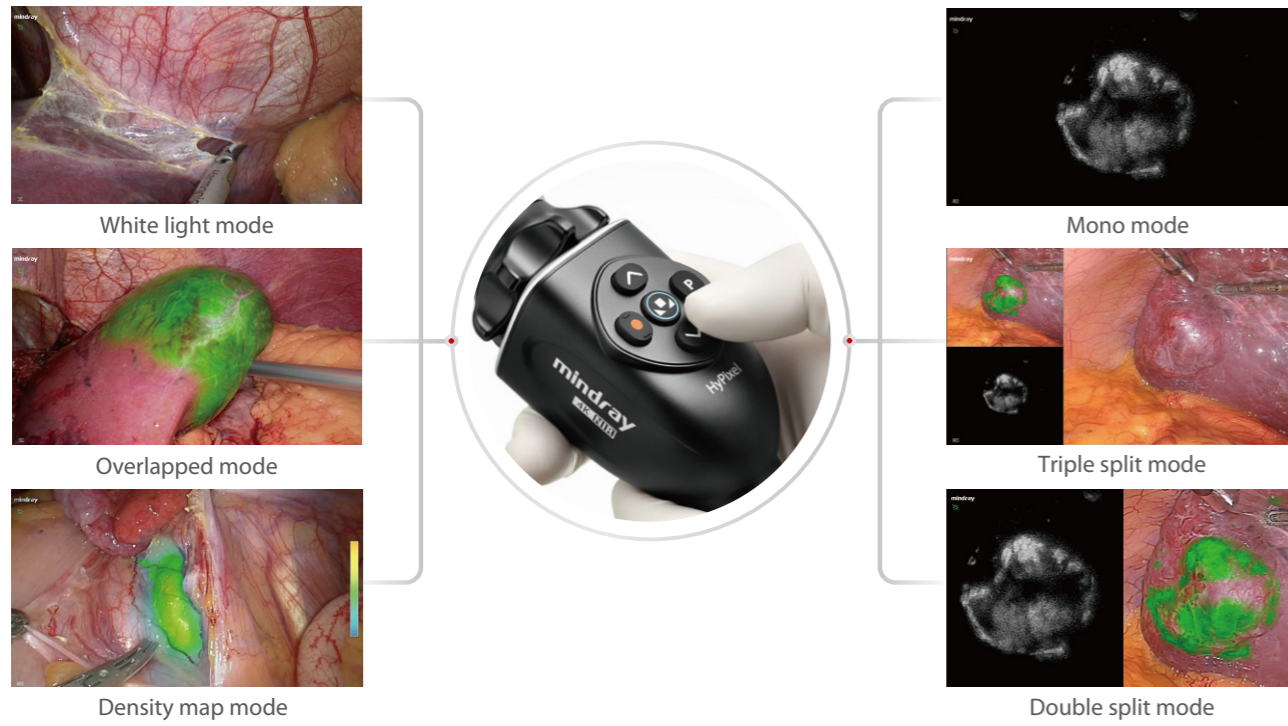


Before

After

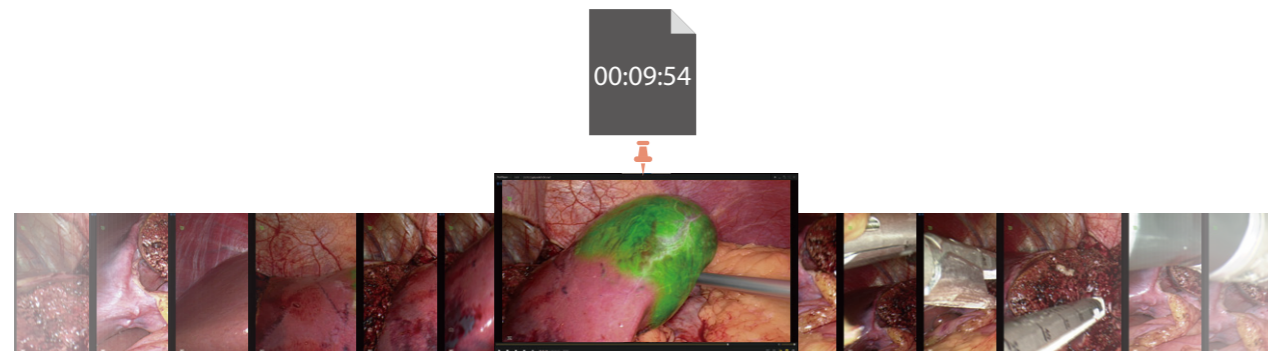
Easy-to-Use

Switch multiple imaging modes with one click



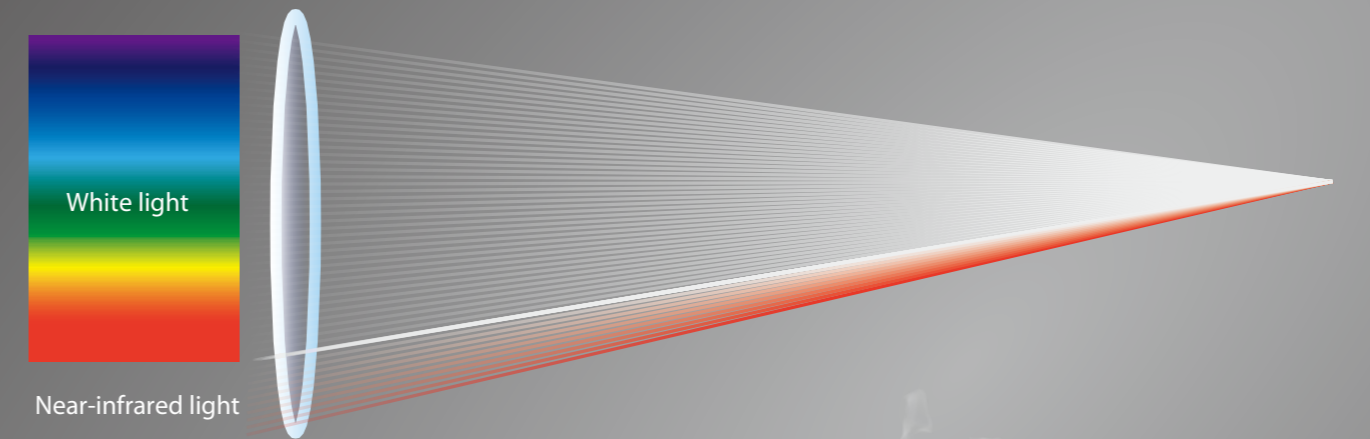
Built-in USB recording with bookmark

Video recording and screenshot function can work simultaneously, with the names of screenshots helping simplify video editing.



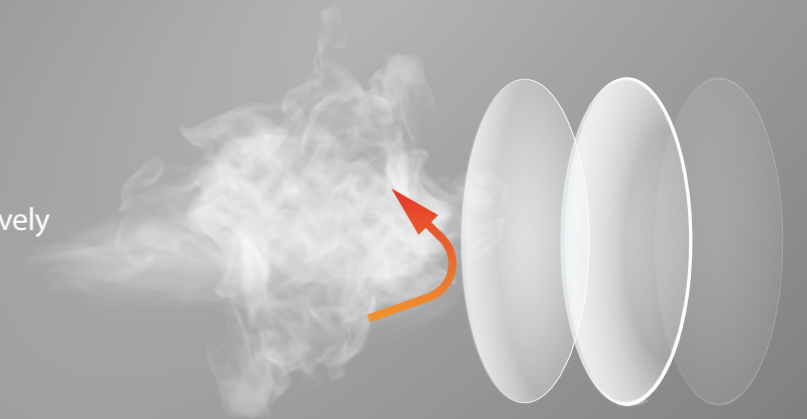
Fog-resistant rigid endoscope with large depth of field

Independent dual-optical path design enables greater compatibility with both white light and fluorescence images.



Unique fog-resistant technology can effectively reduce fog issues.

Patent ID: CN201910333472.1



3-200mm large depth of field ensures a focused vision from far to near.

