



TOP-LOADED FLUSHER DISINFECTOR

**Amigo™**

# A reliable performer with a dual role

Top-loaded flusher disinfecter with integrated slop basin.

Flusher disinfecters in the Amigo series can be used to perform an important dual role in your sluice room. Amigo not only cleans and disinfects a wide range of circulation goods such as urine bottles and bedpans, but also acts an emptying point for all kinds of receptacles.

Amigo is a top-loaded unit, designed for counter-height access. The front is lower than the rear, creating wider access when the top lid is open, thus making it easy to load, empty and monitor. This also makes the emptying of cleaning buckets and other large receptacles easier when using Amigo as a slop basin.



Amigo can be used for the cleaning and disinfecting of human waste receptacles in a wide range of shapes and sizes.



### **Use Amigo for cleaning and disinfection**

With Amigo, soiled items are cleaned by several jet nozzles that deliver water under high pressure into the chamber. The cleaning phase is followed by thermal steam disinfection, which eliminates the need for additional chemicals. The nozzles are strategically distributed to help ensure effective cleaning and disinfection of receptacles, inside and out. The entire process – from emptying to cleaning and disinfection – takes only 4-7 minutes.

After each disinfection phase, all parts of the system interior – chamber, pipes, nozzles etc – are disinfected by steam injection with the Pipe System Disinfection (PSD) feature. When the

cleaning/disinfection process is completed, the lid automatically opens about 10 centimetres to help speed up the drying and cooling process.

### **Use Amigo as a convenient slop basin**

The integrated slop basin offers a convenient way to empty and clean receptacles. These can be emptied directly and the contents are flushed away by pressing the rim flush button. After emptying is completed, Amigo also serves as a clinical sink to further support your disinfection protocol.

# Key features and benefits

## Top-loaded flush chamber designed for easy access

- Top-loaded design enables counter-height access.
- Slanted front creates wider access when top lid is open, for easy loading and emptying.
- Deepdrawn chamber design accommodates larger receptacles.
- When cleaning/disinfection is complete, lid automatically opens 10cm for faster drying and cooling.

## Integrated slop basin

- Rim flush activates at the press of a button.
- Serves as a convenient slop basin and efficiently empties receptacles of various sizes.
- Optional turning device automatically inverts receptacles to empty them, reducing the need for manual handling.

## Thorough cleaning

- Strategically distributed rotating injector nozzles reach and clean receptacles inside and out.
- Wide range of holders available for different goods and receptacles.







Included as a standard feature, the foot pedal can be used to open and close the lid, as well as to start the most frequently used program.

### Touch control panel with LCD display

- The Amigo's control panel features a simple interface and LCD display presenting the following indicators and function keys:
  - Process Running
  - Process Complete
  - Alarms
  - Rim flush
  - Program Selections

### Easy program selection

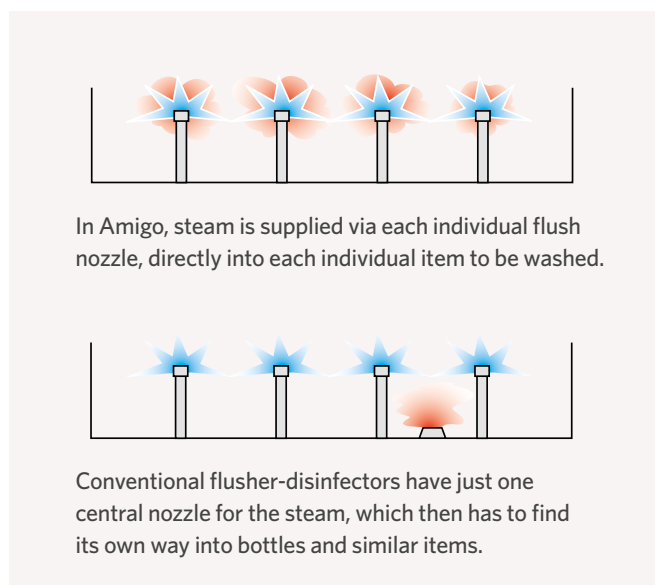
- Memory available for up to 25 programs.
- Five programmable buttons activate the most frequently used programs.
- The most frequently used program can be pedal-activated.

### Thermal steam disinfection

- Steam disinfection is injected through all cleaning nozzles, which are strategically located to reach receptacles, inside and out.
- Pipe System Disinfection (PSD) feature automatically disinfects.

### Wall-mounted or free standing

- Both options offer free space under the machine for access to perform floor cleaning.



In Amigo, steam is supplied via each individual flush nozzle, directly into each individual item to be washed.

Conventional flusher-disinfectors have just one central nozzle for the steam, which then has to find its own way into bottles and similar items.

### Foot pedal supports efficiency and hygiene

- Pressing the foot pedal opens or closes the lid.
- Supports hands-free operation to reduce risk of contamination.
- The pedal can also be used to start the most frequently used program.

# Enhance sluice room efficiency

Amigo plays a dual role to support an efficient disinfection protocol.

An efficient, well-planned sluice room is vital in a care facility's efforts to ensure good hygiene and combat the threat of cross-infection. Delivering both the function of cleaning/disinfecting as well as emptying of receptacles, the Amigo plays a dual role to support an effective infection control system at your care facility.

## Designing a better sluice room

Amigo is a functional multi-tasker that can easily be integrated into your sluice room design.

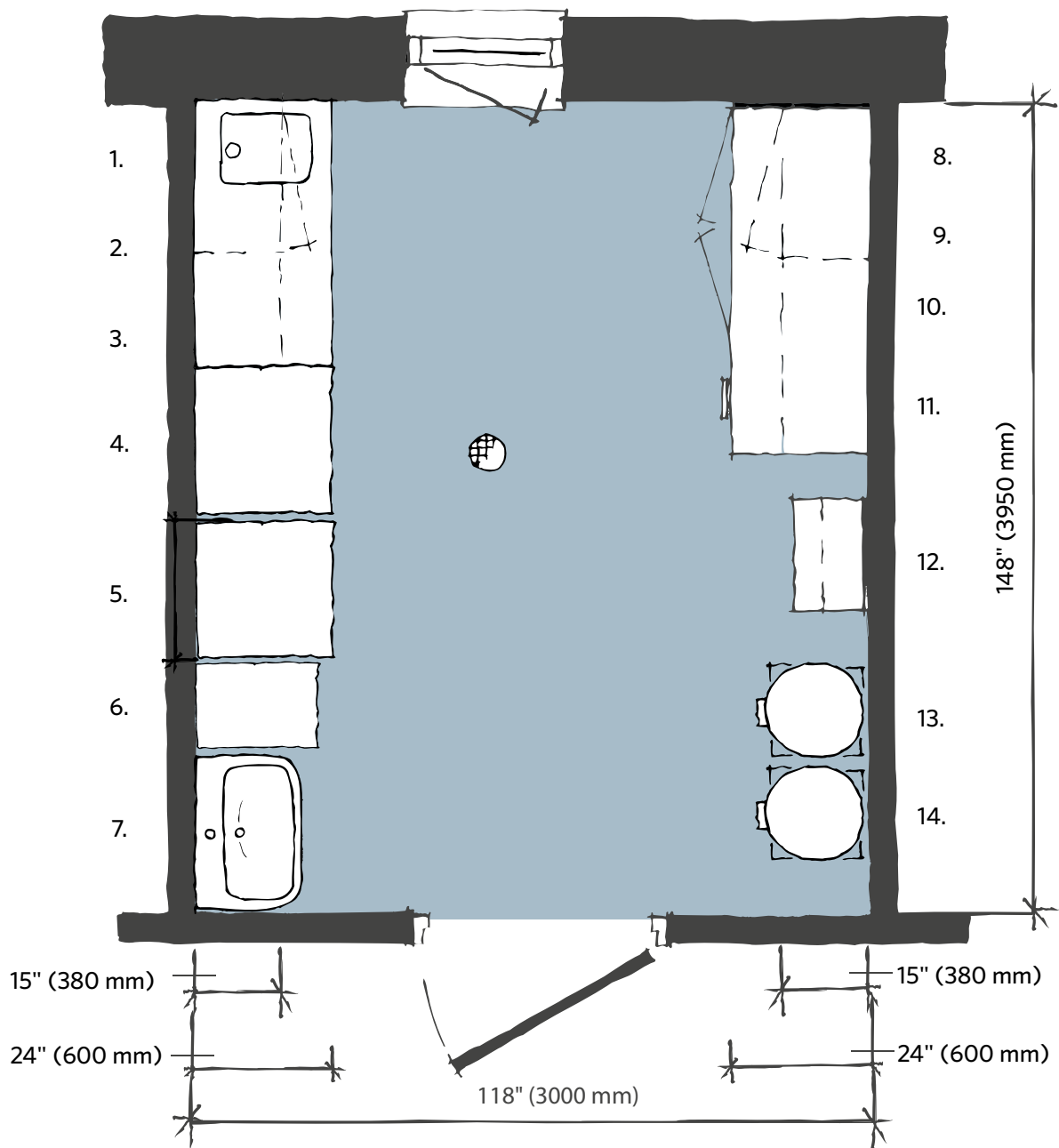
- The machine's slop basin eliminates the need for a separate emptying unit, thus saving time, space and money.
- Top-loaded design saves floor space as the lid opens upwards.
- Amigo can be supplied as a wall-mounted or freestanding unit. Both options provide access under the machine for easy floor cleaning.

## Supporting an efficient working environment

- An easy-to-program machine with a user-friendly display.
- Designed for convenient counter-height access, with a slanted front to create a wider opening with the lid is open.
- Convenient foot pedal for opening/closing the lid supports hands-free operation to reduce the risk of cross-contamination.

Arjo can assist you in designing an efficient sluice room and establishing an overall infection control strategy. We also provide detailed space requirement guidelines, expert insights and downloadable resources. For more information, contact your local Arjo representative or visit the Arjo Guide for Architects and Planners on [arjo.com](http://arjo.com).

## Space requirement



## Layout example for large sluice room

- |                                      |   |  |
|--------------------------------------|---|--|
| 1. Lockable wall cabinet             | 7. Hand washbasin with dispensers for liquid soap and disinfectant, disposable paper towels and waste paper bin | 11. Clean storage shelf                    |
| 2. Sink unit with discharge table    | 8. Lower lockable cabinets  | 12. Cleaning equipment for the sluice room |
| 3. Stainless steel shelves           | 9. Work top   | 13. Bag holder for dirty linen             |
| 4. Utensil washer disinfectant       | 10. Heated storage cabinet  | 14. Bag holder for refuse                  |
| 5. Flusher disinfectant              |   |  |
| 6. Slop basin to empty large buckets |   |  |

# Amigo

## PRODUCT INFORMATION

Weight	85 kg (187 lbs)
Width	590 mm (23 ¼")
Depth	660 mm (26")
Height	1000-1060 mm (39 ½-41 ¾")
Drain connection	Ø 90mm (3 ½") or 110 mm (4 ½") floor/wall connection
Power Consumption	0.16 kWh/cycle
Max. external temperature	40° C
Noise level	59 dB (A)

## Water connections

Cold water	15 mm (½"), 70-800 kPa, 20 l/min
Warm water	45-60°C, 15 mm (½"), 70-800 kPa, 20 l/min
Steam	15 mm (½"), 30-300 kPa, 0.3 kg/cycle

## Water consumption (without cooling\*)

Economy program	18 l/cycle
Normal program	29 l/cycle
Intensive program	36 l/cycle

## Electrical connection

L1:	230V, 1N+PE, 50Hz, 1x20A, 4.3 kW
L2:	230V, 3N+PE, 50Hz, 1x16A, 5.5 kW
L3:	400V, 3N+PE, 50Hz, 3x10A, 5.5 kW

Further electrical connections are available

Dimensions and specifications of the Amigo matching cabinets available on request

\* Cooling 6l approx.

© Arjo, September 2019.

Only Arjo designed parts, which are designed specifically for the purpose, should be used on the equipment and products supplied by Arjo. As our policy is one of continuous development we reserve the right to modify designs and specifications without prior notice.

At Arjo, we are committed to improving the everyday lives of people affected by reduced mobility and age-related health challenges. With products and solutions that ensure ergonomic patient handling, personal hygiene, disinfection, diagnostics, and the effective prevention of pressure injuries and venous thromboembolism, we help professionals across care environments to continually raise the standard of safe and dignified care. Everything we do, we do with people in mind.

Arjo AB • Hans Michelsensgatan 10 • 211 20 Malmö • Sweden • +46 10 335 4500

[www.arjo.com](http://www.arjo.com)